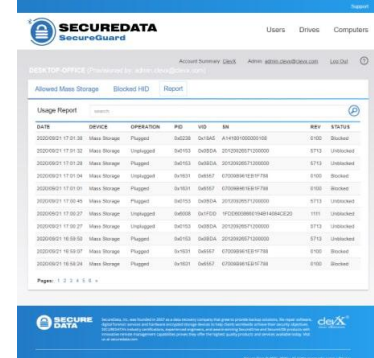
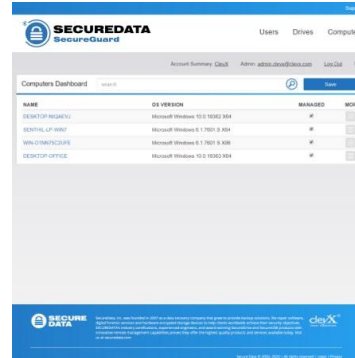


SecureData® SecureGuard DLP Best Practices

SECUREDATA® SECUREGUARD DLP USB BLOCKER

SecureGuard DLP USB Blocker is a powerful tool for preventing unauthorized data transfer via USB devices.

- **Installation:** Before installing SecureGuard on all systems, log in into the Web Console and create global settings which will apply to all systems (if applicable). Global settings can be created by clicking on "Allowed Mass Storage" in the "Computers Dashboard" without selecting a specific computer. Install SecureGuard DLP USB Blocker on all systems where data security is a concern. Ensure you have administrative rights during the installation process.
- **Policy Setting:** Set strict policies regarding USB usage. Determine which devices will be allowed and which will be blocked based on your organizational needs and risk assessment.
- **Whitelisting:** Use the whitelisting feature wisely. Only allow trusted devices and regularly review the whitelist to ensure it remains updated.
- **Monitor Logs:** Regularly check the activity logs. This can help you spot any unauthorized attempts to use USB devices.
- **Employee Awareness:** Educate your employees about the use of SecureGuard DLP USB Blocker and the risks associated with unauthorized USB usage. This increases their understanding of why certain devices may be blocked.



- **Regular Audits:** Conduct regular audits of your USB security measures to ensure they are effective and up-to-date.
- **Backup Important Data:** While SecureGuard DLP USB Blocker is designed to protect data, it's still crucial to maintain regular backups of important data.
- **Customer Support:** Don't hesitate to contact SecureGuard customer support if you encounter any issues or have any concerns. They can help you maximize the use of your USB blocker.
- **SecureData SecureGuard DLP safeguards:**
 - Portable, external data storage devices (USB, HDD, SSD, etc.)
 - HIDs/Human interface devices (mouse, keyboard, headset, etc.)
 - Mobile and photo/video devices (phone, tablet, camera, etc.)
 - Card readers
 - Printers and scanners
 - And more

MORE ONLINE

For more features and for troubleshooting, see the SecureDrive KP Model User Manual on our website: <https://www.securedrive.com/documents/user-manual-securedrive-kp.pdf>



REGISTER YOUR DEVICE

To register your drive on your SecureData account, go to <https://www.securedrive.com/register>

